



DOUBLE WALL TRAILERS

990 GALLONS



FULLY COMPLIANT FOR BULK FUEL

The DW offers 110% containment and is fully compliant with the EPA's Spill Prevention, Containment, and Countermeasures (SPCC) Program as well as USDOT 406 regulations for the transportation of gasoline and other low flashpoint fuels and flammable liquids on public roadways.

Like all Thunder Creek trailers, Double Wall Trailers are built to travel smoothly at highway speeds and stand up in the toughest environments.

The rear utility box model can be equipped to function as an on-site shop on wheels. Utility Box options include a grease system, a variety of toolboxes and utility appliances such as compressors, generators and welders.

An ISO 22241 Compliant DEF Delivery System can be added in the front enclosure at any time. This system utilizes Thunder Creek's exclusive 2-in-1 DEF Pumping System to handle DEF in a closed path to maintain purity to off-road machines.

**DOT406
& EPA SPCC
COMPLIANT
FOR GASOLINE
AND DIESEL**



FUEL | DEF | SERVICE | LUBE



DOUBLE WALL TRAILERS

FUEL AND SERVICE TRAILERS

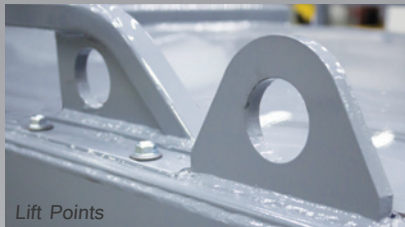
INDUSTRY LEADING
3 YEAR TANK
WARRANTY



Fully Contained Pumping System



Manhole for Tank Inspection



Lift Points

STANDARD FEATURES

DUAL WALL FUEL TANK

- 10 Gauge Steel Tanks
- Lockable Enclosure for Pumps, Vents, Fill Ports
- 2" Roll Bar Around Tank, Vents and Fill Ports
- Tank Bolts to Chassis with Built-In Lift Points

- 110% Fuel Containment
- Outer Tank can be separated for Inspection
- 16" Manhole in Primary Tank for Inspection
- Emergency Shut-Off

TRAILER

- 7.5" x 1/4" Formed Frame
- Dexter® Torsion Axles and EZ Lube Hubs
- Electric Brakes with Breakaway Safety System
- 10-Ply Tires, ST235/80R16, Load Range E with Steel Wheels
- 7,000 lb. Enclosed Jack and Safety Tow Chains

- DOT Placards, Reflective Tape and LED Lights
- Replaceable, Bolt-on Fenders
- Dual Coat Gray Polyurethane Paint
- Replaceable Diamond Plate Rock Guard
- Adjustable Height 2 5/16" Ball Hitch
- Wiring Wrapped in Protective Braid

FRONT ENCLOSURE

- Automatic Interior LED Lighting
- 12V Deep Cycle Marine Battery
- Lockable Hatch-Style, Weather-Sealed Doors
- Fire Extinguisher

PUMP ENCLOSURE

- Fully Contained Pumping Area
- Lockable Hatch-Style, Weather-Sealed Doors
- Automatic Interior LED Lighting
- See Pumping System Options for Fuel Pump Configuration

OPTIONS

Items with + can be added any time to expand the functionality of the trailer as your operation grows.

TRAILER OPTIONS

- Aluminum Wheels
- 14-Ply Tires, ST235/85R16, Load Range G
- Custom Color
- Solar Battery Maintainer +
- Electric/Hydraulic Jack +
- 100 Gallon DEF Delivery System (details below) +
- 30 Gallon Auxiliary Oil Tank and 3 GPM Pump +
- Gear Drive 8 GPM Pump Upgrade for Oil Tank
- Five Drawer Tool Chest for Front Enclosure +
- Spill Containment Kit +
- Static Discharge Reel +
- Stationary Side Step +

PUMPING SYSTEM OPTIONS

- 15 GPM Industrial Grade 12V Pump
- 25 GPM Gas Powered Pump
- 12V Gasoline Pumping System
- 35' x 1" Retracting Hose Reel, Auto-Trip Nozzle (standard with selection of pump)
- 50' x 1" Retracting Hose Reel, Auto-Trip Nozzle
- 10 Micron Fuel Filter (standard with selection of pump)
- 4 Micron Fuel Filter
- Digital Fuel Meter +

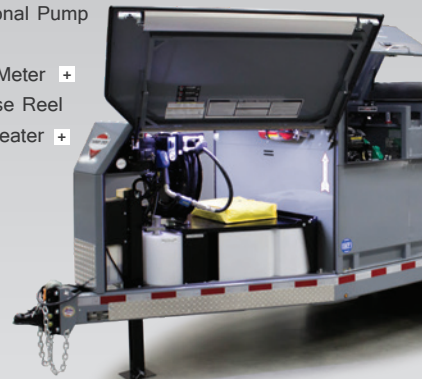
REAR UTILITY BOX OPTIONS*

- Rear Utility Box (41.75"d x 58.75w x 49.75"h)
- Five Drawer Tool Chest for Utility Box +
- Can+Towel Holder +
- Two Drawer Low Boy Tool Chest +
- Work Bench with Vise +
- 35 lb. Grease Kit +
- Welder+Comp+Gen with 50' Air/Elec. Combo Reel +
- Comp+Gen with 50' Air/Elec. Combo Reel +
- 35 CFM Air Compressor with 50' Air Hose Reel +

*Available on DW990UB model only

DIESEL EXHAUST FLUID OPTIONS

- DEF Delivery System +
- 100 Gallon HDPE Tank
- Bi-Directional Pump
- 35' Reel
- Digital DEF Meter +
- 50' DEF Hose Reel
- 120V DEF Heater +



SPECIFICATIONS

Model	DW990	DW990UB
Inner Tank	990 gallon four baffles 10 ga.	990 gallon four baffles 10 ga.
Outer Tank	1,089 gallon 10 gauge	1,089 gallon 10 gauge
Torsion Axles Hubs	dual 7,000 lbs. 8 bolt hubs	triple 6,000 lbs. 8 bolt hubs
L W H	19" 7' 6'	23' 7' 6'
Empty Weight GVWR	4,250 lbs. 14,000 lbs.	5,270 lbs. 18,000 lbs.